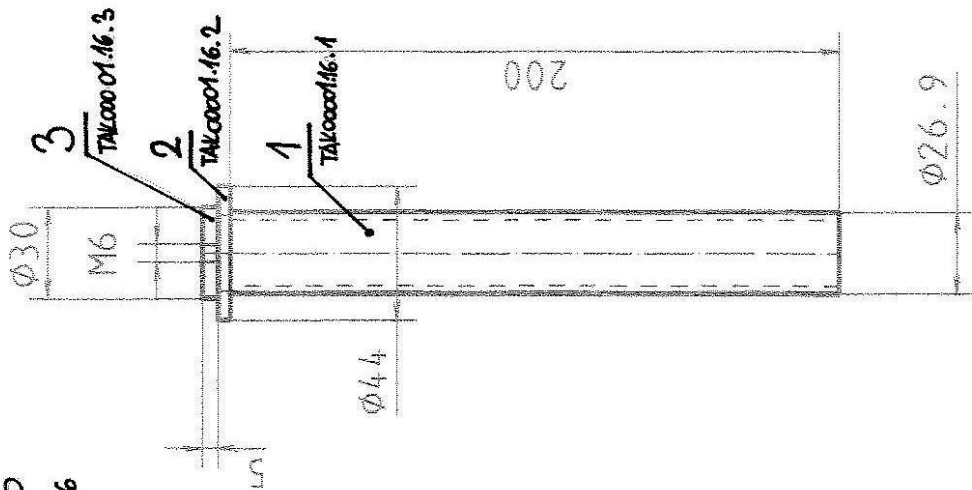


POZ. 16
TAK 00001.16



2x
Rd $\phi 30 \times 5$
(Stanzabfall)
132 111 0218

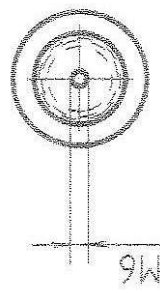
PŘEKLAD

dne: 26. 10. 2004

PROVEDLA

P. Nováková

2x
Rohr $3/4" \times 200$
141 013 0227



2x
Scheibe $\phi 44 \times \phi 25 \times 4$
B 25 Din 125 B
A.Nr. 20400010